

# HALLWAY GALLERIES

## Looking for the perfect space to host your art exhibition?

The Artscape Youngplace Hallway Galleries offer three floors of spectacular corridor space for solo and group exhibitions, receptions and events. The galleries are located within Artscape Youngplace, a 75,000 sq.ft. community cultural hub in West Queen West.

The Hallway Galleries are available for rental by the week, with exhibition space ranging in size from small vitrines to the entire facility.

### Features

- Prime downtown west location at Queen & Shaw Streets in the heart of the Queen West Art and Design District
- High-traffic exhibition areas that are frequented by artists, cultural workers and the community
- Fully-accessible public building, open 8:00 am to 9:00 pm daily
- Purpose-built exhibition space with prepared surfaces, track lighting and dedicated power
- The ability to host receptions and events in the Hallway Galleries

Part ideas laboratory, part creativity workshop, Artscape Youngplace is home to production, rehearsal, exhibition and administrative space for more than 30 artists and organizations including SKETCH, Luminato Festival, Koffler Gallery + Koffler Centre of the Arts, College Montrose Children's Place and Centre for Indigenous Theatre. The building is also home to the TwoPenny, a full-service café. Free WiFi and comfortable seating is available throughout the main floor Urban Living Lounge.

### About the Hallway Galleries and Vitrine Maps

- Each mounting area location is indicated approximately on the maps. The notations are not to scale
- Each mounting area has a corresponding track for adjustable lighting fixtures, provided by the gallery
- Please consult the Exhibition Guide for all mounting parameters and restrictions

## HALLWAY GALLERIES



Second floor hallway at north end looking south.

## 2ND FLOOR NORTH

- Each mounting area location is indicated approximately on the map below. The notations are not to scale
- Each mounting area has a corresponding track for adjustable lighting fixtures, provided by the gallery
- Please consult the Exhibition Guide for all mounting parameters and restrictions

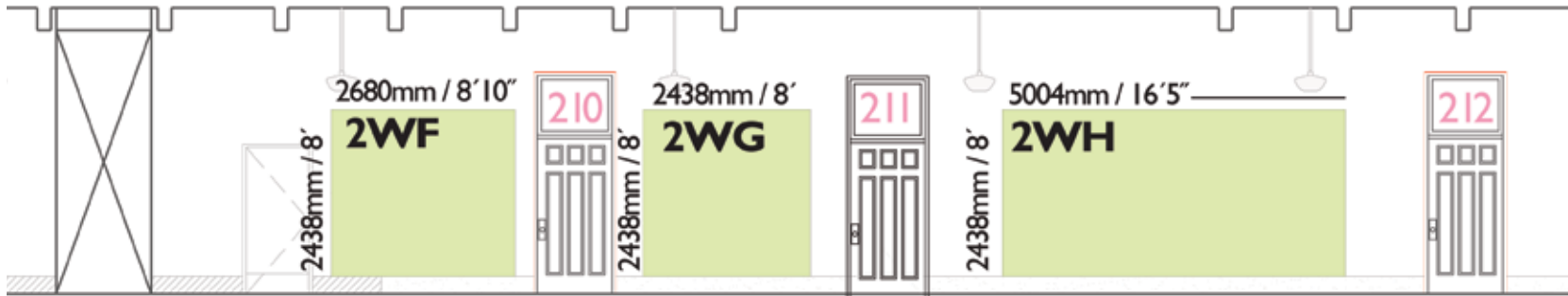
### 2nd Floor

- Ceilings: 14' tall
- Hallway length: 156'
- Hallway depth: 13'10"
- Height to infrastructure (pipes): 10'

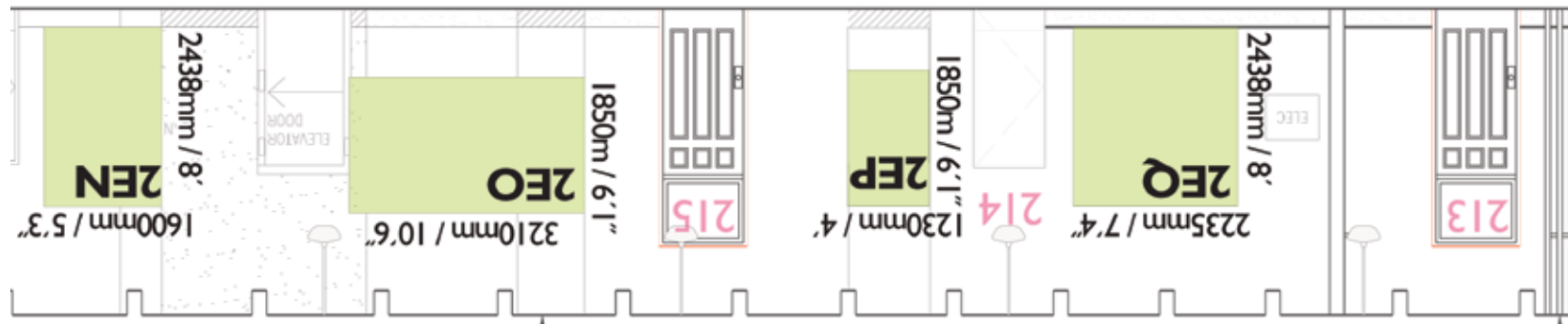


# HALLWAY GALLERIES → 2ND FLOOR NORTH

## NORTHWEST



## HALLWAY



## NORTHEAST

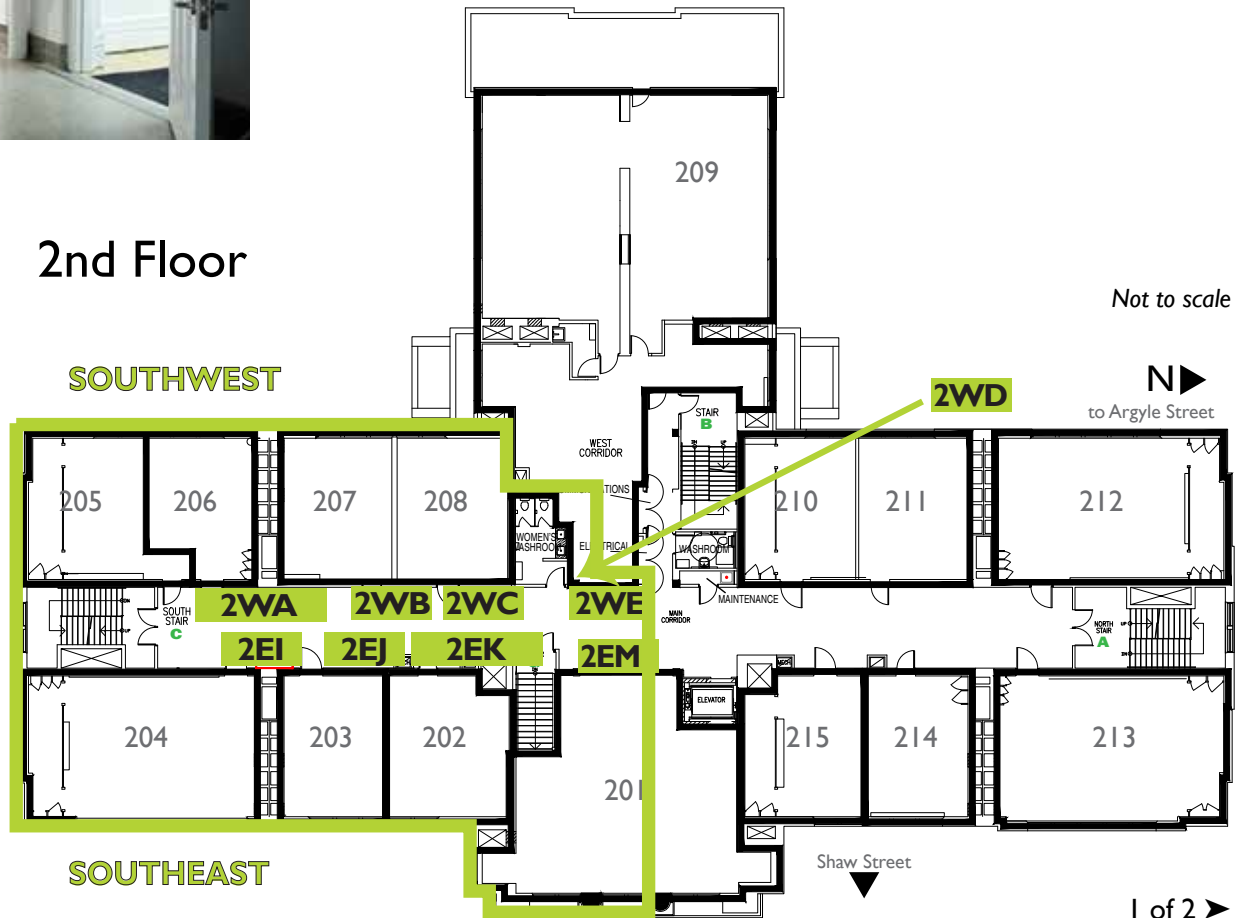
## HALLWAY GALLERIES



Second floor hallway at south end looking north.

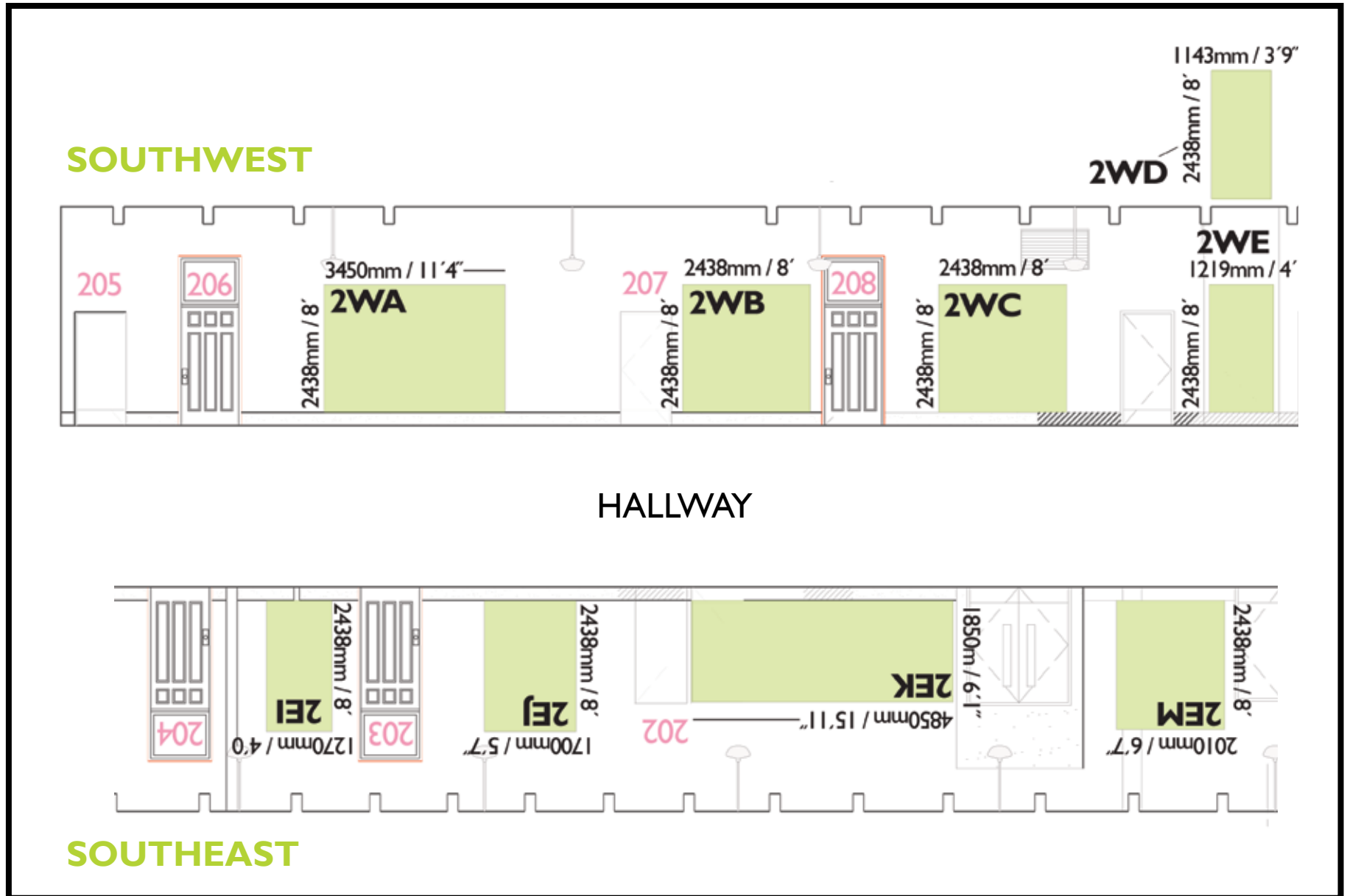
## 2ND FLOOR SOUTH

- Each mounting area location is indicated approximately on the map below. The notations are not to scale
- Each mounting area has a corresponding track for adjustable lighting fixtures, provided by the gallery
- Please consult the Exhibition Guide for all mounting parameters and restrictions



- Ceilings: 14' tall
- Hallway length: 156'
- Hallway depth: 13'10"
- Height to infrastructure (pipes): 10'

# HALLWAY GALLERIES → 2ND FLOOR SOUTH



## HALLWAY GALLERIES



Third floor hallway at north end looking south.

## 3RD FLOOR NORTH

- Each mounting area location is indicated approximately on the map below. The notations are not to scale
- Each mounting area has a corresponding track for adjustable lighting fixtures, provided by the gallery
- Please consult the Exhibition Guide for all mounting parameters and restrictions

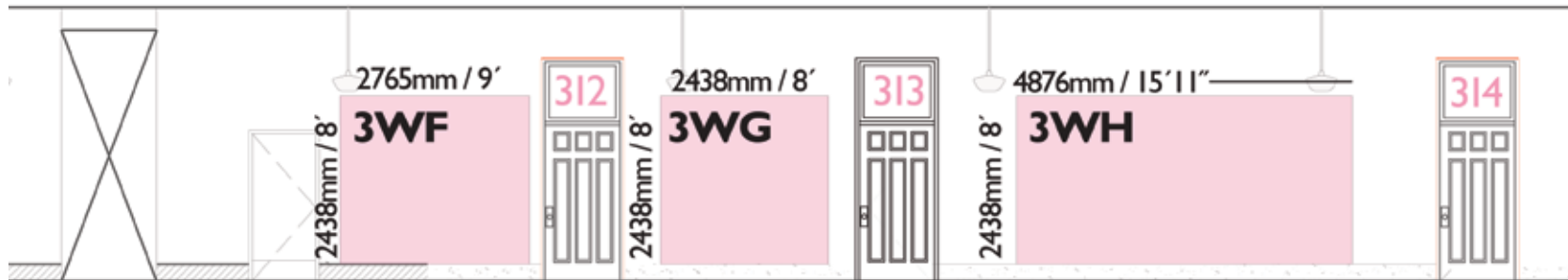
### 3rd Floor

- Ceilings: 13' tall
- Hallway length: 156'
- Hallway depth: 13'10"
- Height to infrastructure (pipes): 9'

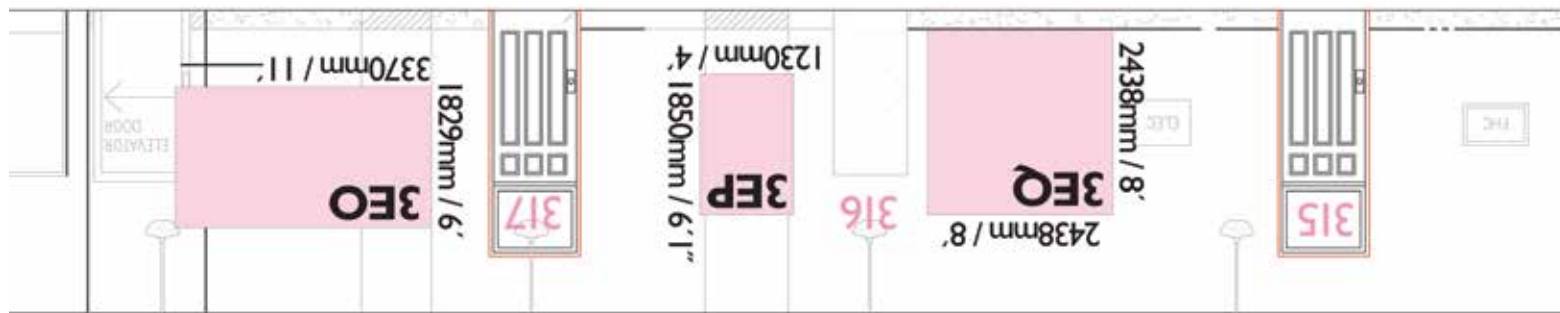


# HALLWAY GALLERIES → 3RD FLOOR NORTH

## NORTHWEST



## HALLWAY



## NORTHEAST

## HALLWAY GALLERIES

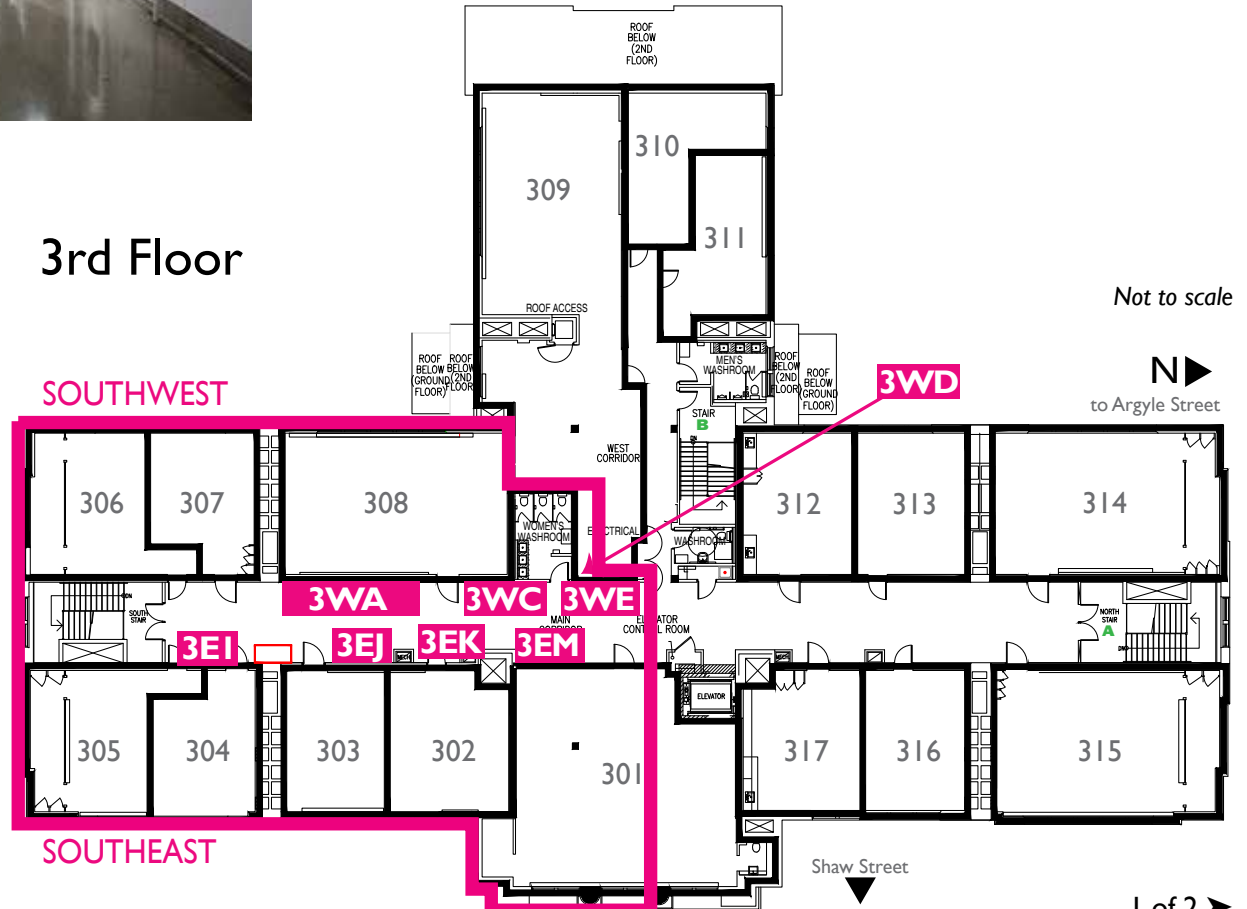


Third floor hallway at south end looking north.

## 3RD FLOOR SOUTH

- Each mounting area location is indicated approximately on the map below. The notations are not to scale
- Each mounting area has a corresponding track for adjustable lighting fixtures, provided by the gallery
- Please consult the Exhibition Guide for all mounting parameters and restrictions

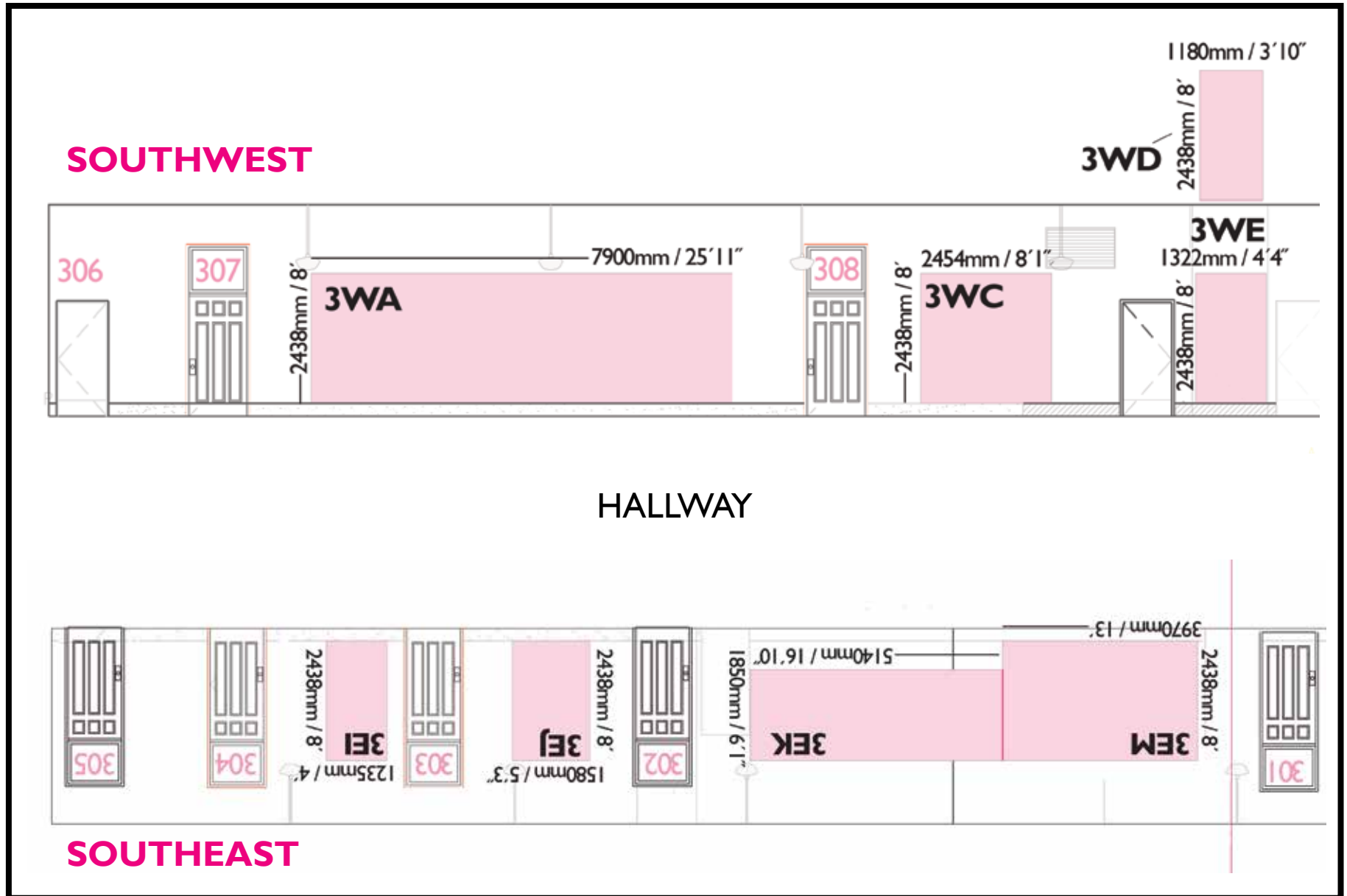
### 3rd Floor



- Ceilings: 13' tall
- Hallway length: 156'
- Hallway depth: 13'10"
- Height to infrastructure (pipes): 9'



# HALLWAY GALLERIES → 3RD FLOOR SOUTH



## HALLWAY GALLERIES → 1ST FLOOR VITRINES



VITRINE A

### VITRINE A

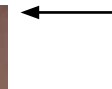
- 7'6" wide = 7' inside
- 4' tall = 42" inside
- 12" deep = 10" inside
- 2 adjustable shelves



VITRINE B

### VITRINE B

- 3' wide = 30" inside
- 8' tall = 90" inside
- 18.5" deep = 17" inside
- 2 adjustable shelves



VITRINE C

### VITRINE C

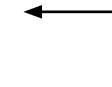
- 8' wide = 90" inside
- 3' tall = 30" inside
- 8" deep = 7" inside
- 2 adjustable shelves



VITRINE D

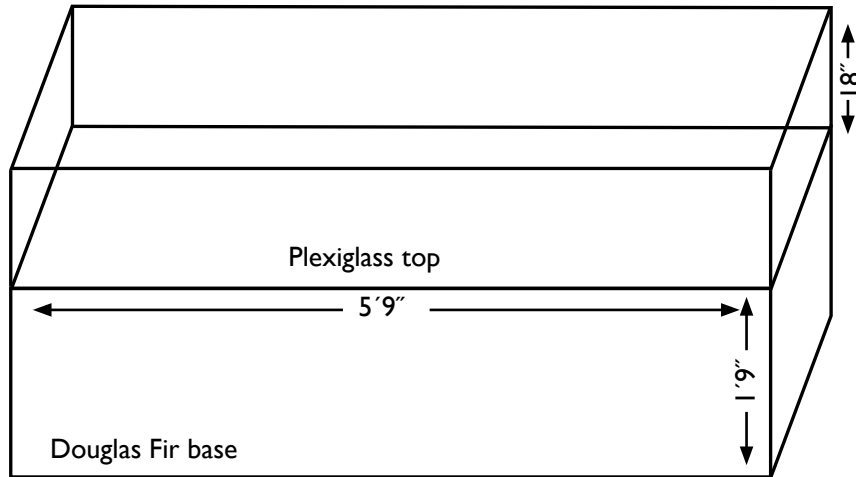
### VITRINE D

- 4' wide = 43" inside
- 4' tall = 43" inside
- 18" deep = 16" inside
- 2 adjustable shelves

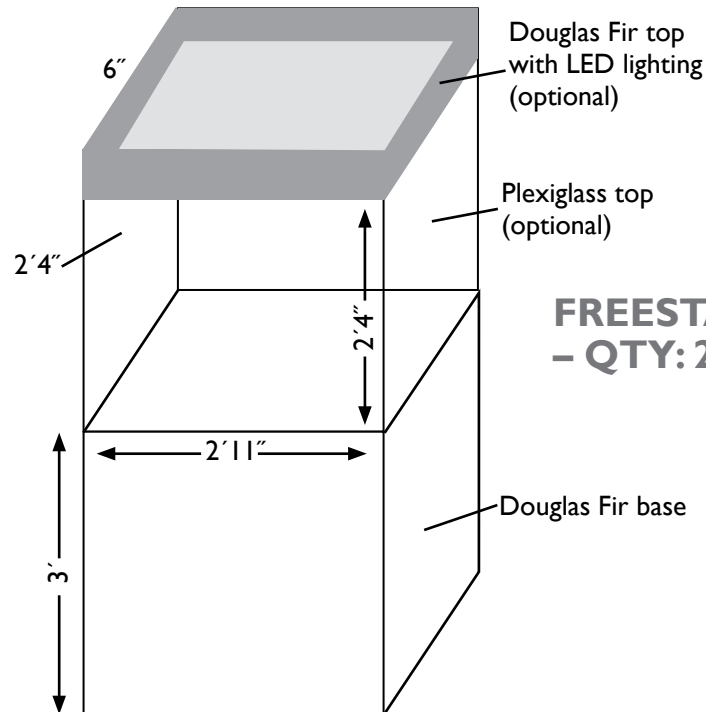
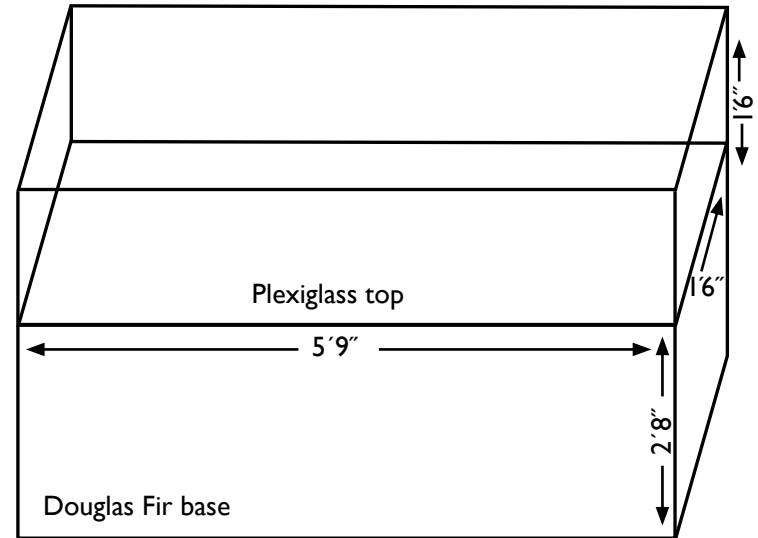


# HALLWAY GALLERIES → PORTABLE VITRINES

## LONG TABLE – QTY: 1



## TALL TABLE – QTY: 1



Plexiglass top (optional)

## FREESTANDING CUBE – QTY: 2

Douglas Fir base